

USB Digital Borescope


JDX series



Ø4.5mm 
Outer Braided Stainless Steel

Ø6.0mm 
PVC Coating



	JDXS-45012	JDXS-60012
Articulations	4.5mm Two ways	6.0mm Two ways
Articulation angle	Two ways 180°	Two ways 155°
Probe Material	Outer Braided Stainless Steel	PVC Coating
LED	Front	 Front/Side Ultra Lumi
Buttons	Snapshot/ Brightness+/ Brightness-	
Video/Photo file format	.avi / .jpg	
Video/Photo resolution	640x480	
Working Temperature	-10°C~60°C (Camera head)	
Storage Temperature	-10°C~60°C	
Operating System	WindowsXP / Win7 / Win 8 / Win 10	
System Requirement	CPU: AMD Athlon II 2GHz above (Quad core) Independent graphics card / RAM 4G or above	
System Dimention (Console)	184mm x 35mm x 51 mm	



Convenient integrate usage with Car Diagnose Computer



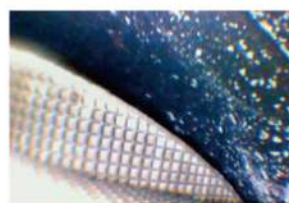
Burning Chamber



Valve



Exhaust System



Exhaust System



Evaporator



Transmission



Intake System



Intake System